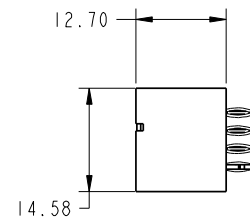
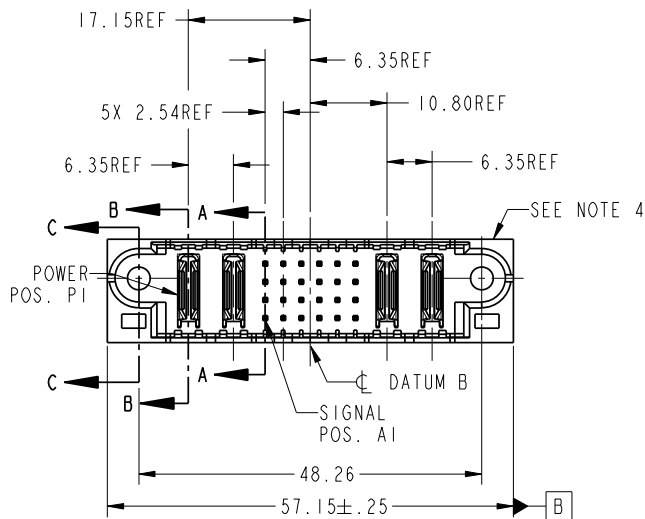


Tous droits strictement reserves. Reproduction ou communication a des tiers interdite sous quelque forme que ce soit sans autorisation écrite du propriétaire. Propriété de c FCI. Droits de reproduction FCI.



All rights strictly reserved. Reproduction or issue to third parties in any form whatever is not permitted without written authority from the proprietor. Property of FCI. Copyright FCI.

PRODUCT NO.	ROWS	POWER		SIGNAL						POWER			
		E1	P1	P2	1	2	3	4	5	6	P3	P4	E2
51710-007-- NOTE: 3	0 B A		PC	PC	GG	GK	GG	GG	GG	GG	PC	PC	



CODE	DIM "M" MATING LENGTH		CONTACT TYPE
PC	[N/A]	[N/A]	POWER
G	.270	[6.86]	SIGNAL
K	.220	[5.59]	SIGNAL
HA	N/A	[N/A]	HOLD-DOWN

mat'l code				SEE NOTE		tolerances unless otherwise specified		CUSTOMER	
lfr	ecn no.	dr	date	linear	0.X ± 0.3	COPY		FCI www.fciconnect.com	
A	V03-1233	TAB	11/18/03		0.XX ± 0.13	projection		title 2P + 24S + 2P VERTICAL PRESS-FIT HEADER	
B	DG05-0389	GuoJM	10/13/05		0.XXX ± 0.051	MM		product family PwrBlade	
C	DG07-0357	JULIA	09/10/07	angles	0° ± 2°	scale 1:1		size A	
				dr	T. BRUNGARD	11/18/03		code 213	
				enrg	M. GRAY	11/18/03		sheet 1 of 4	
				chr	M. GRAY	11/18/03			
				appd	M. GRAY	11/18/03			
sheet index	revision	C	C	C	C				
	sheet	1	2	3	4				



product family PwrBlade
size A
dwg no 51710-007
code 213
sheet 1 of 4

cage code 22526

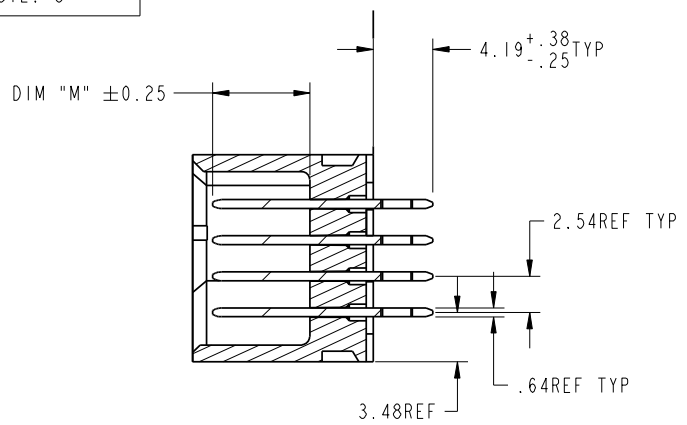
Pro/E

Tous droits strictement reserves. Reproduction ou communication a des tiers interdite sous quelque forme que ce soit sans autorisation ecrite du proprietaire. Propriete de c FCI. Droits de reproduction FCI.

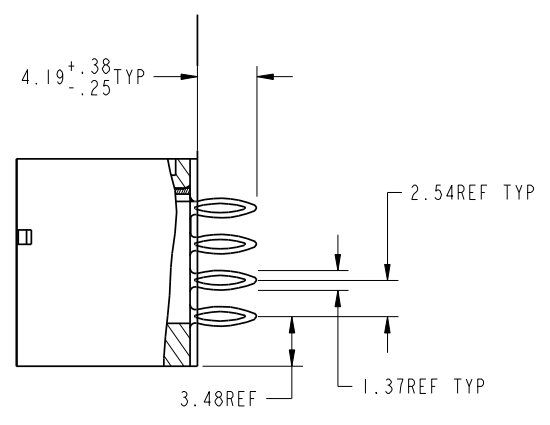


All rights strictly reserved. Reproduction or issue to third parties in any form whatever is not permitted without written authority from the proprietor. Property of FCI. Copyright FCI.

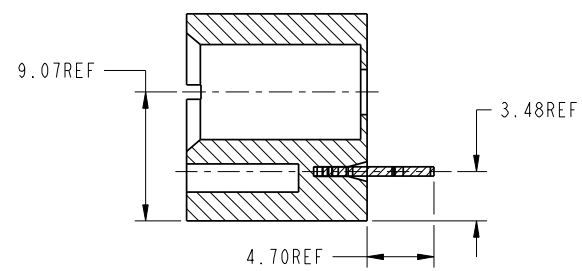
PRODUCT NUMBER
51710-007--
NOTE: 3



SECTION A-A
SCALE 2:1



SECTION B-B
SCALE 2:1



SECTION C-C
SCALE 2:1

mat'l code				SEE NOTE		tolerances unless otherwise specified		CUSTOMER		FCI www.fciconnect.com	
lfr	ecr no.	dr	date	linear	0.X ±0.3	projection		COPY		title	
c				angles	0.XX ±0.13	MM		2P + 24S + 2P		VERTICAL PRESS-FIT HEADER	
				dr	0.XXX ±0.051	1:1		product family		code	
				enr	0° ±2°			PwrBlade		213	
				chr				size		sheet	
				appd				51710-007		2	
sheet index	revision sheet										

cage code 22526

Pro/E

Tous droits strictement reserves. Reproduction ou communication a des tiers interdite sous quelque forme que ce soit sans autorisation écrite du propriétaire. Propriete de c FCI. Droits de reproduction FCI.



All rights strictly reserved. Reproduction or issue to third parties in any form whatever is not permitted without written authority from the proprietor. Property of FCI. Copyright FCI.

1 | 2

3 |

4

PRODUCT NUMBER
51710-007--
NOTE: 3

NOTES:

1. DIMENSIONS AND TOLERANCES ARE IN ACCORDANCE WITH ASME Y14.5M, 1994 UNLESS OTHERWISE SPECIFIED.

CONNECTOR NOTES:

- 2 HOUSING MATERIAL: UL 94 V-0 GLASS FILLED
HIGH-TEMP THERMOPLASTIC
POWER CONTACT MATERIAL: COPPER ALLOY
SIGNAL PIN MATERIAL: COPPER ALLOY
 - 3. PLATING:
51710-007 ,51710-007LF PLATING SPEC. WAS SHOWN IN THE PRINT OF 10064183.
 - 4 MANUFACTURER'S NAME, P/N, AND DATE CODE TO APPEAR ON THIS SURFACE.
 - 5. PRODUCT SPECIFICATION GS-12-149.
APPLICATION SPECIFICATION BUS-20-067.
 - 6. PACKAGED IN TRAYS.
- PCB NOTES:
- 7. ALL HOLE DIAMETERS ARE FINISHED HOLE SIZE.
 - 8. MOUNTING HOLES, WHERE APPLICABLE, ARE UNPLATED.
 - 9 $\varnothing 1.151 \pm 0.025$ DRILLED HOLES PLATED WITH
0.008 MIN SnPb OR Sn OVER 0.03
TO 0.08 Cu PLATING TO ACHIEVE
 $\varnothing 1.02 \pm 0.07$ HOLE.
 - 10 "DIM XXX" TO BE DETERMINED BY THE CUSTOMER.
 - 11 CONNECTOR KEEP-OUT ZONE.
 - 12. FOR PRESS FIT APPLICATION USE FCI CAM TOOL 430169-XXX.

A

A

B

B

mat'l code				SEE NOTE		tolerances unless otherwise specified		CUSTOMER		FCI www.fciconnect.com	
lfr	ecr no.	dr	date	linear	0.X ± 0.3	COPY		projection		title	
C					0.XX ± 0.13					2P + 24S + 2P VERTICAL PRESS-FIT HEADER	
				angles	0° ± 2°					product family PwrBlade code	
				dr	T. BRUNGARD 11/18/03			scale		size	
				enrg	M. GRAY 11/18/03			1:1		dwg no	
				chr	M. GRAY 11/18/03					A 51710-007	
				appd	M. GRAY 11/18/03					sheet	
sheet index		revision sheet								4	

1 | 2

Pro/E

3 |

cage code 22526

4